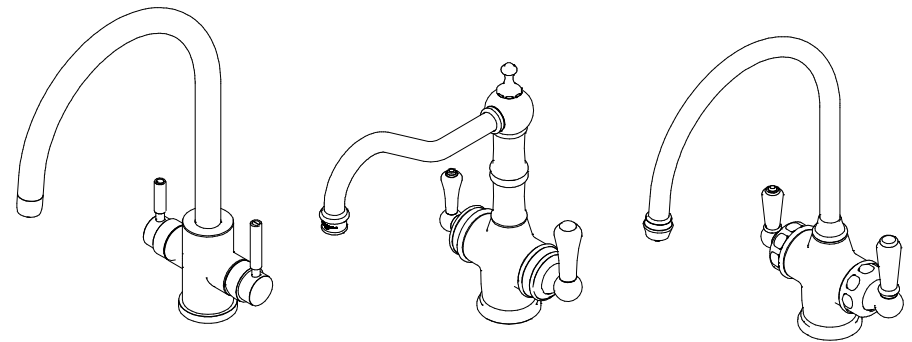
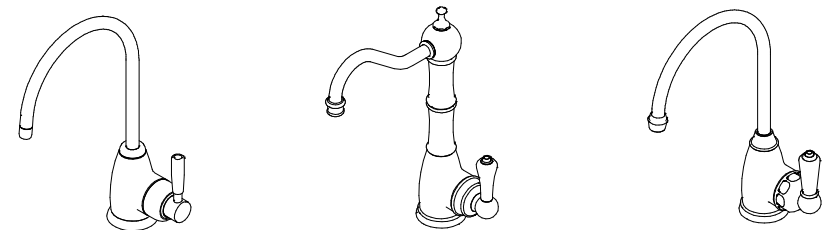


The Kitchen Collection

Hot Lever/Valve Replacement



The 3-in-1 Collection



The Mini Hot Dispenser collection

SPARE PARTS & SERVICE



PHONE: 01708 526 361

ENQUIRIES@PERRINANDROWE.CO.UK
WWW.PERRINANDROWE.CO.UK

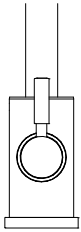
PERRIN & ROWE PRODUCTS ARE MANUFACTURED IN ENGLAND USING QUALITY MATERIALS, THE LATEST TECHNOLOGY AND BUILT TO THE HIGHEST STANDARDS.

WE WOULD LIKE TO THANK YOU FOR PURCHASING THIS PERRIN & ROWE PRODUCT AND INVITE YOU TO VIEW THE COMPREHENSIVE RANGE OF PERRIN & ROWE TAPWARE, SHOWER FITTINGS, BATHROOM ACCESSORIES, SOAP DISPENSERS AND BATHROOMWARE.

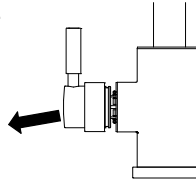
PLEASE CONTACT US TO RECEIVE OUR LATEST PRODUCT CATALOGUES OR VIEW THEM ON WWW.PERRINANDROWE.COM.AU

• LEVER REMOVAL •

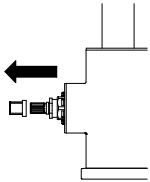
1. ENSURE THE LEVER IS IN THE VERTICAL POSITION.



2. PULL THE HANDLE FIRMLY AWAY FROM THE BODY, AT A SLIGHTLY DOWNWARDS ANGLE. IF IT DOESN'T COME COMPLETELY OFF, YOU MAY NEED TO PRISE IT OFF BY PLACING SOMETHING BETWEEN THE HOOD AND THE BODY (MAKING SURE NOT TO DAMAGE THE BODY) AND LEVERING IT OFF. DO NOT PULL FROM THE TOP OF THE LEVER!

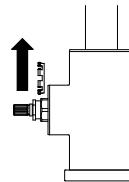


3. IF THE WHITE VERNIER INSERT IS STILL ON THE VALVE SPINDLE, REMOVE AND DISCARD.



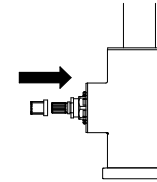
4. REMOVE THE BARBED RETAINING RING FROM THE VALVE AND DISCARD.

IF YOU ARE ONLY REPLACING THE LEVER PLEASE PROCEED TO LEVER REPLACEMENT.

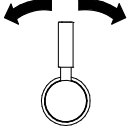


• LEVER REPLACEMENT •

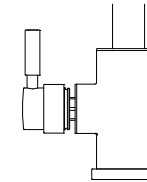
1. PLACE THE NEW VERNIER ON THE VALVE SPINDLE.



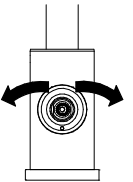
2. ENSURE THAT THE LEVER OF THE REPLACEMENT HANDLE IS IN THE LOCK POSITION, IF NOT ROTATE THE HANDLE ON THE HOOD UNTIL THE LOCK POSITION IS FOUND.



3. CAREFULLY PUSH THE HANDLE ONTO THE VERNIER INSERT SO AS TO ENGAGE THE SPLINES ONLY A SMALL AMOUNT. THE HANDLE SHOULD BE IN A VERTICAL POSITION.



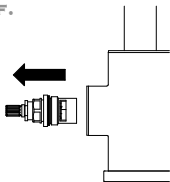
4. IF THE LEVER IS IN A VERTICAL POSITION, PROCEED TO STEP 5. IF NOT CAREFULLY REMOVE THE HANDLE FROM THE VALVE SPINDLE, LEAVING THE VERNIER INSERT ON THE TAP. REMOVE THE VERNIER INSERT CAREFULLY AND ROTATE A SMALL AMOUNT IN THE REQUIRED DIRECTION. REPEAT UNTIL THE VERTICAL POSITION IS ACHIEVED.



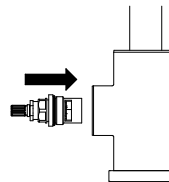
• VALVE REPLACEMENT •

1. FIRST ENSURE THE MAINS WATER IS SHUT OFF.

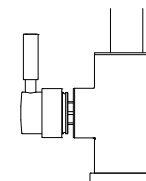
USING A 17MM AF SPANNER OR SUITABLE TOOL SLOWLY LOOSEN THE VALVE. REMOVE THE VALVE FROM THE BODY AND DISCARD APPROPRIATELY.



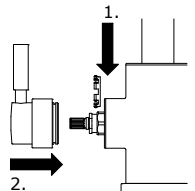
2. INSERT THE NEW VALVE AND TIGHTEN BY HAND UNTIL THE THREADS ARE ENGAGED. CONTINUE TO TIGHTEN WITH A 17MM AF SPANNER, DO NOT OVERTIGHTEN AS THIS MAY CAUSE THE HANDLE TO BE STIFF.



5. FULLY PUSH THE HANDLE ONTO THE BODY AND TEST THE HANDLE IS WORKING CORRECTLY. ONCE SATISFIED THE HANDLE IS WORKING, REMOVE THE HANDLE. THE VERNIER INSERT MAY BE LODGED IN THE HANDLE AT THIS STAGE, HOWEVER THIS IS OK.



6. PLACE THE NEW BARBED RETAINING RING IN THE GROOVE ON THE VALVE AND REPLACE THE HANDLE, DOUBLE CHECK THE VERTICAL POSITION HAS BEEN MAINTAINED AND THEN PUSH THE HANDLE FIRMLY UNTIL IT LOCATES ON THE BARBED RETAINING RING, YOU MAY HEAR A CLICK AND THE HANDLE SHOULD BE FLUSH WITH THE BODY.



NOTE: THERE WILL BE AIR IN THE SYSTEM FOLLOWING A VALVE CHANGE, WE ADVISE THAT YOU RUN THE HOT TAP FOR APPROX. 1 MINUTE TO ELIMINATE ANY AIR IN THE SYSTEM.